

Chester Waterways Strategy Workshop

April 2013

Chester Waterways Strategy

Context & Background

“Given the significance of the Canal and River Dee as a network of waterways from a leisure, visual, urban form and heritage perspective it is vital that a comprehensive Waterways Strategy is developed for the city.”

“enhancing and fully using the attractive and distinctive network of waterways, which are central to the city’s development”

One City Plan

“Chester contains many enviable assets including..waterfronts and waterways of the River Dee and historic Shropshire Union Canal....there is an need for a comprehensive Waterways Strategy to identify and join up all of the opportunities they present.”

Chester Waterways Strategy

Context & Background

- Purpose of developing a strategy
 - Ensure potential of waterways is recognised and realised
- Process of workshop
 - Invited workshop, key stakeholders
 - Fact finding exercise
 - Start of strategy development



Chester Waterways Strategy



Structure & Scope of Strategy



Structure & Scope of Strategy

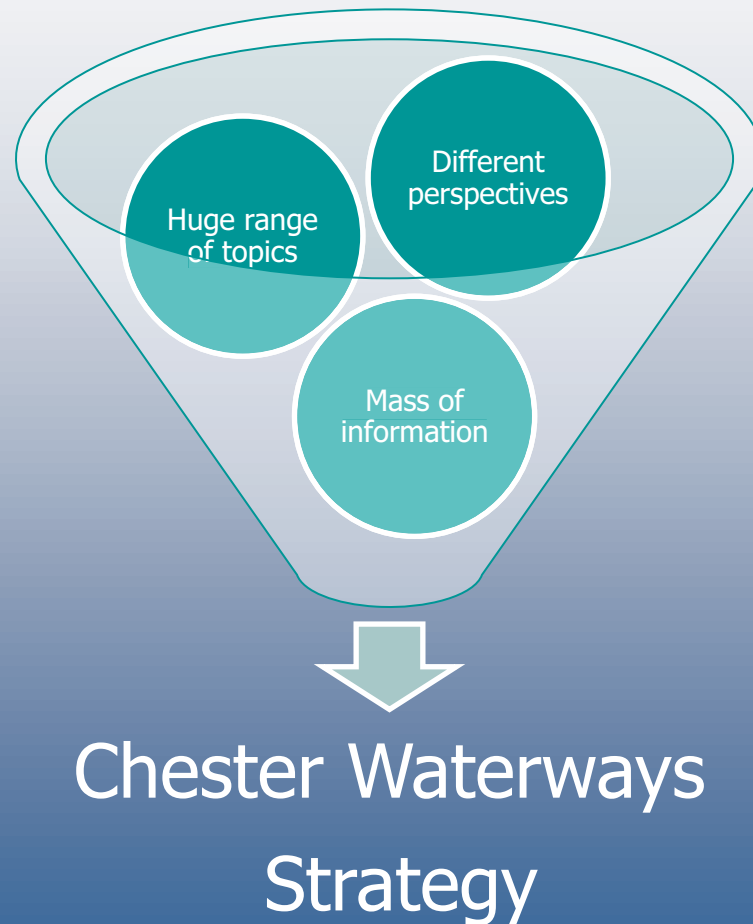
- **Evidence Base**

- Inland Waterways, Unlocking the Potential and Securing the Future of Inland Waterways – British Waterways
- Review of Sports Activities on Outdoor Waterways – CWAC
- Ellesmere Port & Chester GI Links Action Plan – CWAC
- Chester Transport Strategy being prepared – AECOM
- Microeconomic Evidence for the Benefits of Investment in the Environment – Natural England
- Urban Land Institute Report Chester
- Chester Waterways Study 1994

Etc !!!

Chester Waterways Strategy

Structure & Scope of Strategy



4 Key Sections

1. Introduction: Chester's Waterways
2. Contexts for Growth
3. Case studies
4. Action Plan Summary

Structure & Scope of Strategy

1 Introduction: Chester's Waterways

- Purpose of document
- Location/maps
- Background information
 - History & heritage
 - Health impacts – general level
 - Broader context sub-region linkages



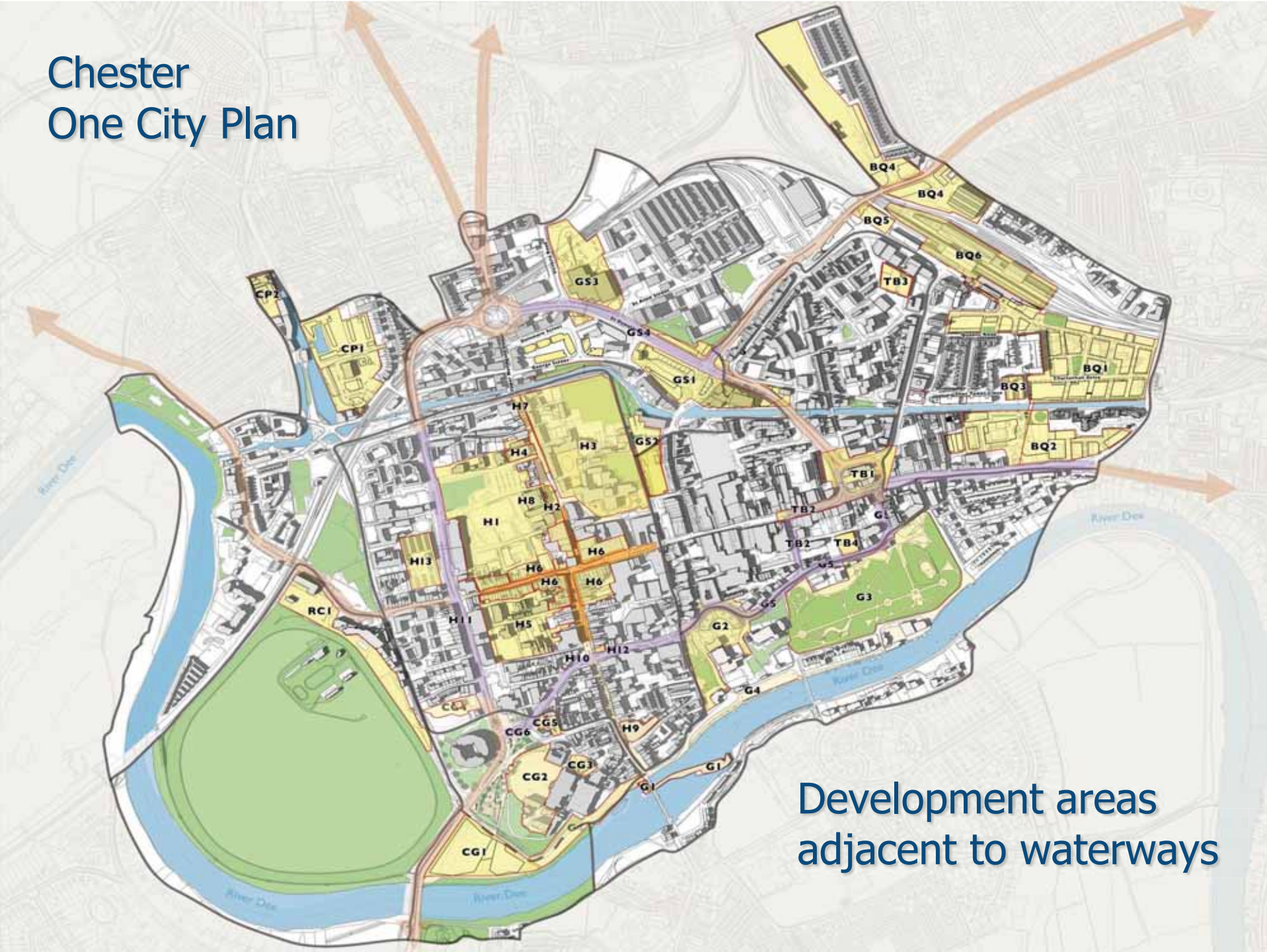
Structure & Scope of Strategy

2 Contexts for Growth

- Economic investment and development areas adjacent to waterways
- Social and recreational use of the waterways
- Value of waterways to the visitor economy

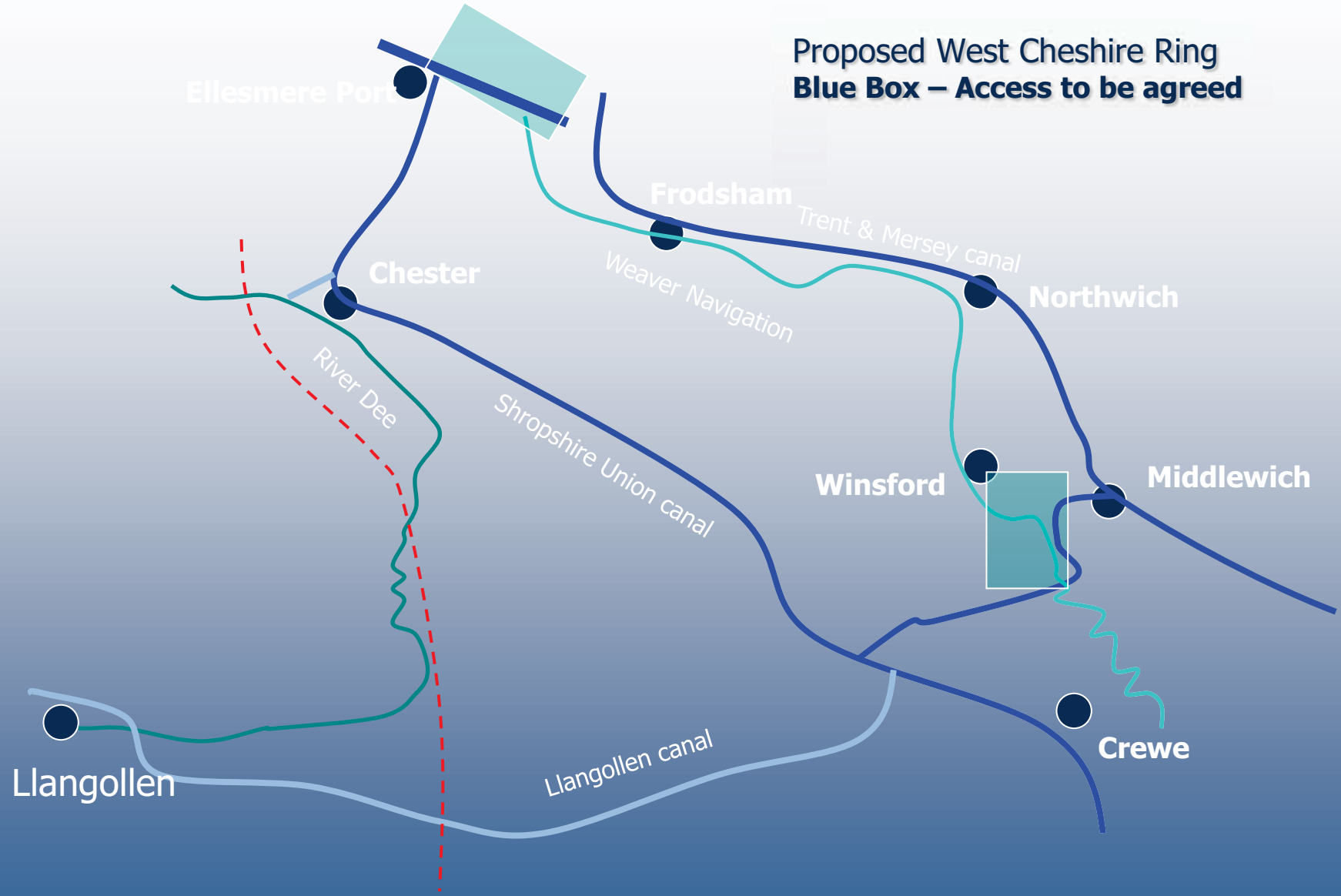


Chester One City Plan



Development areas adjacent to waterways

Proposed West Cheshire Ring
Blue Box – Access to be agreed



Structure & Scope of Strategy

3 Case studies

- Examples of successful regeneration using waterways as a driver
- Best practice models which are relevant to Chester



Structure & Scope of Strategy

4. Action Plan



Background

Contexts
for growth

Best
practice

Action Plan



3 Areas for Discussion – Contexts for Growth

1. Economic investment and development areas adjacent to waterways
2. Social and recreational use of waterways
3. Value of waterways to visitor economy

1. Economic investment and development areas adjacent to waterways

Question 1

How can we maximise the waterway's contribution to the development of Chester city centre?

Question 2

What short, medium and longterm actions can you envisage to deliver this potential?

2. Social and Recreational use of Waterways

Question 1

Can you identify strengths and weaknesses of current use on and next to the river and canal?

Question 2

What actions would you undertake to improve the social and recreational use of the waterways?

3. Value of Waterways to the Visitor Economy

Question 1

What makes a waterways vibrant and successful and how can Cheshire West and Chester maximise the potential of its waterways for the visitor economy?

Question 2

What specific actions could be undertaken to reconnect with and realise the full potential of Chester's waterways?

Chester's Waterways Strategy – Next Steps

Circulate Workshop notes

Feedback from discussions

One City Plan drop in

Tuesday 14th May 4.30 – 6.30

Development of strategy April onwards

Completed Strategy and Action Plan Summer 2013

Thank you!

Follow progress through One City Plan
newsletter and Chester Renaissance website:

www.chesterrenaissance.co.uk

Tel: 01244 976760